

Operations

(Integration of Analog & IP solution)

HiLook Certification Program

First Choice for Security Professionals

Tips

Before connecting and operating the devices, we want to give you the following tips:

- Ensure that the devices are installed in a well-ventilated, dust-free environment.
- The devices are specifically designed for indoor or outdoor use, please confirm the specifications of each product.
- The devices must be secured to a rack or shelf.
- Keep liquids away from equipment.
- Ensure environmental conditions to meet factory specifications.
- Shocks or jolts to equipment may cause damage to sensitive internal electronic components.
- Connect the equipment to a UPS if possible.
- Turn off the unit before connecting and disconnecting peripherals and accessories.
- Use hard disks recommended for HiLook devices.

Content

1

Install HDD, Activation & adding cameras

2

Recording setting

3

Playback and Export

4

Exceptions

Install HDD

- Good practice of HDD installation will guarantee correct operation and management of the information of the system.



Install HDD

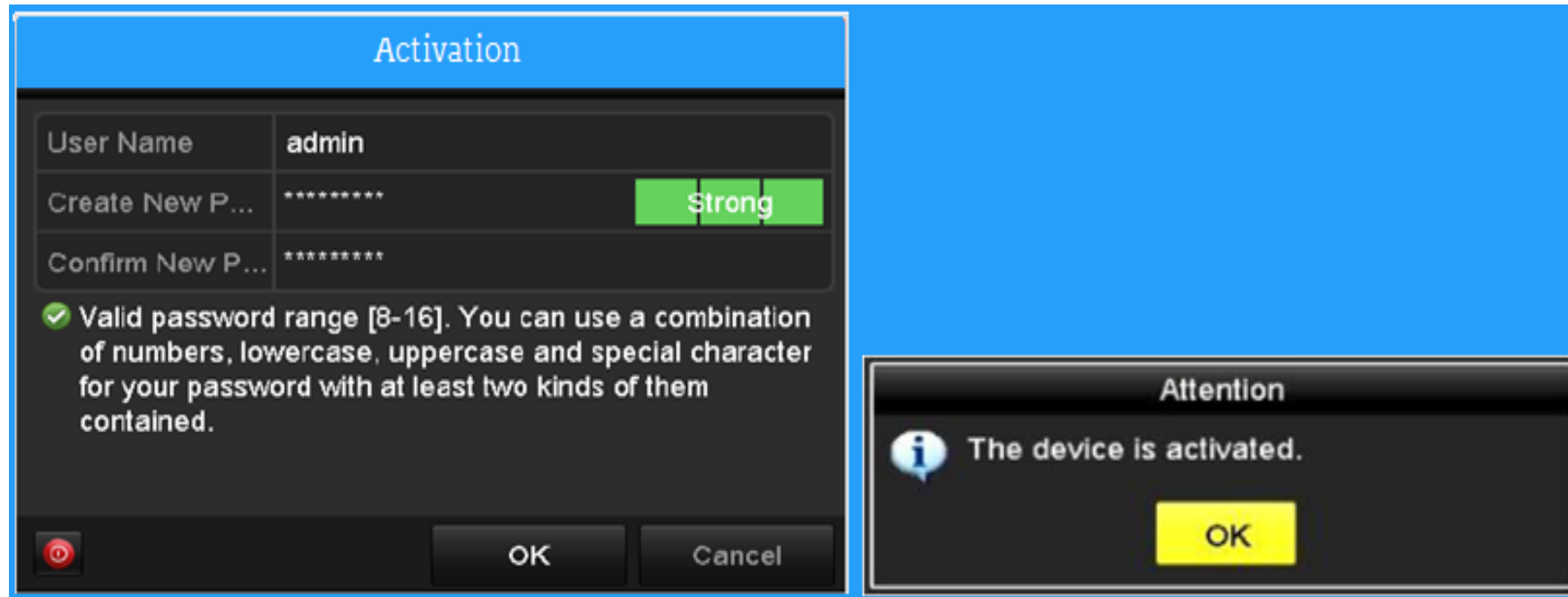


How to Install and Connect Hard Disk to DVR

Activation

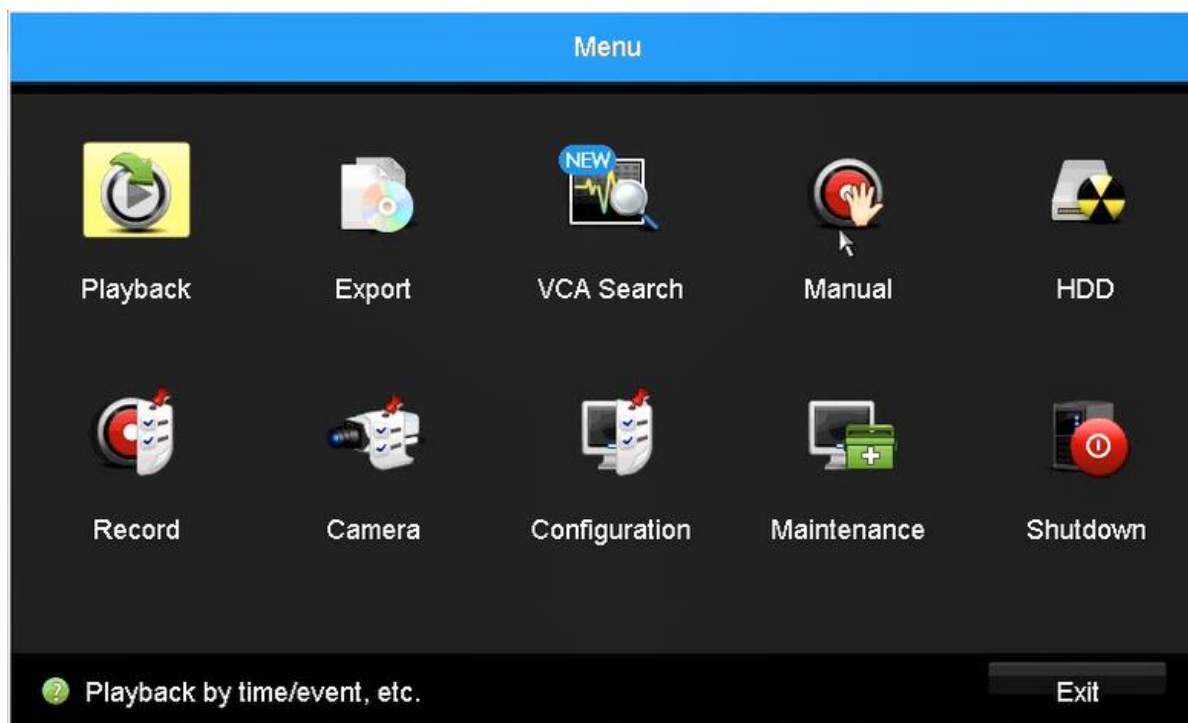
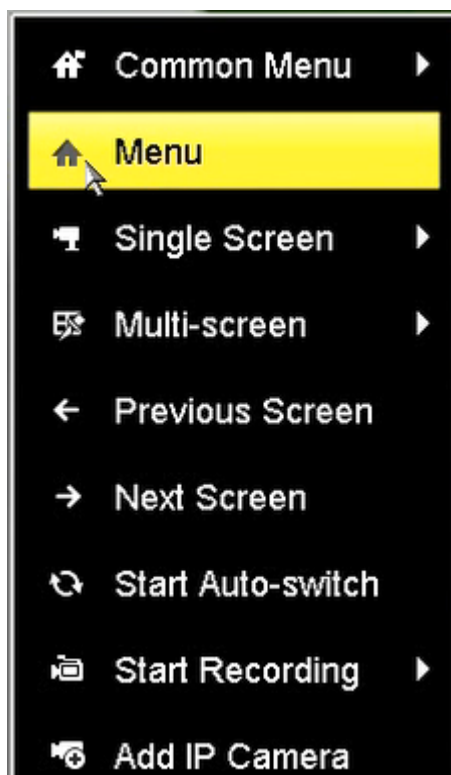
- **Please activate the device**

The first time you turn on the device, you will need to set an administrator password. In this way, we ensure the protection of the device and avoid unauthorized use. Please set a secure password.



GUI Menu

The graphical interface of the recorders is common in all of our recording devices. It is accessed by selecting menu in the main screen (right mouse click).



Add IP Camera

Path

Menu – Camera-IP camera

Cam...	Add/De...	Status	Security	IP Camera Addr...	Edit	Upgrade	Camera Nam
...	+	—	✓ Active	192.168.1.64	📷	—	—
...	+	—	✓ Active	10.16.1.14	📷	—	—
...	+	—	✓ Active	10.16.1.205	📷	—	—

< | | | >

RefreshOne-touch A...UpgradeDeleteOne-touch A...Custom Addi...

Net Receive Idle Bandwidth: 128Mbps

Exit

Important points

1. Cameras in the same IP range will be detected and will be displayed in the list.
2. Before adding, make sure that the added IP cameras have the same password as the recorder.
3. Click on the Add Camera button, or click the "one-touch adding" button to add all the cameras from the list.

Add IP Camera (Custom)

Path

Menu -Camera-IP camera

No.	IP Address	Amount of Channels	Device Model	Pr
1	10.16.1.93	1	IP Dome	H

< | | | >

IP Camera Address	10.16.1.93
Protocol	
Management Port	8000
Transfer Protocol	Auto
User Name	admin
Admin Password	

☒ Continue to Add

Search Add Back

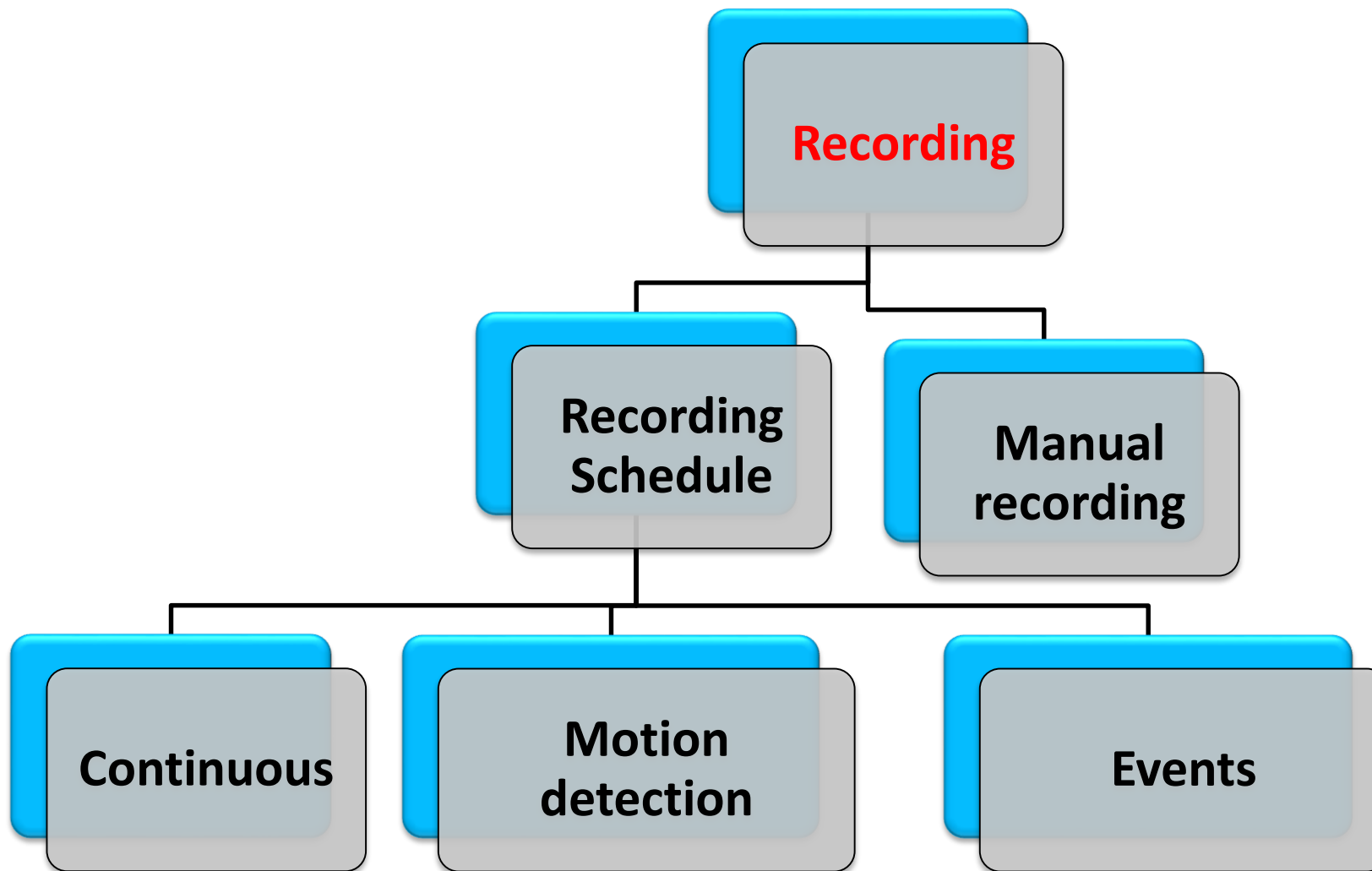
Important points

- Click Add to enter the manual interface.
- Fill in the IP camera, protocol, port, username and password.
- Click the Add Camera button.

Content

- 1 **Install HDD & Activation & Add Camera**
- 2 **Recording setting**
- 3 **Playback and Export**
- 4 **Exceptions**

Recording Settings



Recording Settings-Initialize HDD

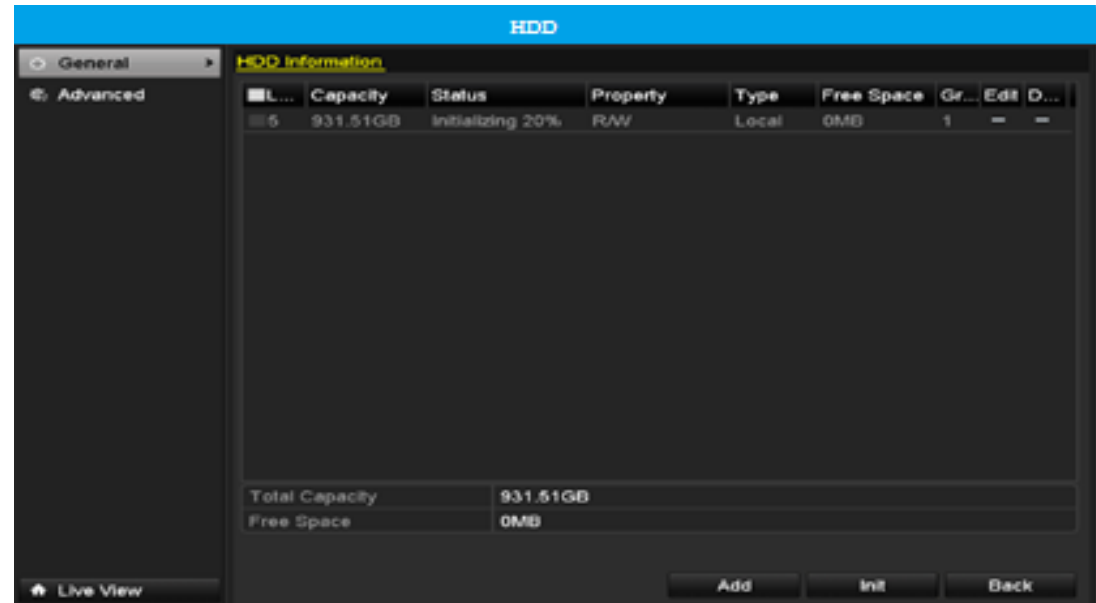
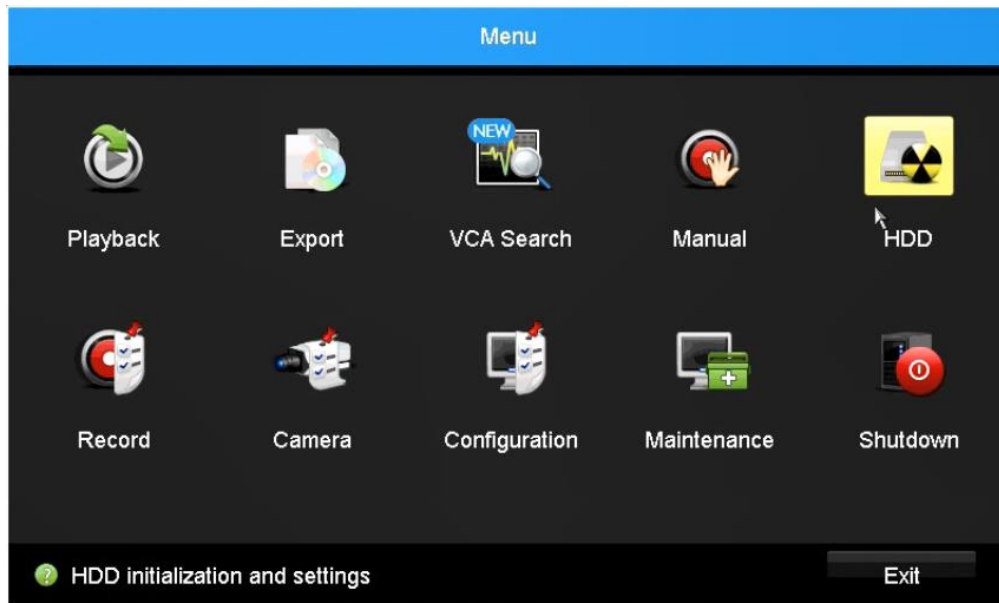
Path

Menu - HDD-General

Please note:

Click on the hard drive that we want to initialize.

Click the "Init" button to start the initialization.



Recording Settings-Schedule Setting

Path

Menu -Record-Schedule

Points to consider:

Choose a camera and set the recording parameters.

Enable the calendar, set the recording type and draw the schedule.

Select the other cameras and copy or configure again.

The image displays two screenshots of the HiLook software interface. The left screenshot shows the 'Menu' screen with various icons for Playback, Export, VCA Search, Manual, HDD, Record, Camera, Configuration, Maintenance, and Shutdown. The right screenshot shows the 'Record' and 'Edit' screens. The 'Record' screen displays a calendar for 'Camera 01' with a grid for recording times (0-24 hours) and a legend for recording types: Continuous (blue), Event (yellow), Motion (green), Alarm (red), M & A (orange), and None (black). The 'Edit' screen shows a table for editing the schedule, with columns for Weekday, All Day, Start/End Time, Type, and Continuous. The table is currently set to 'Mon' and 'All Day' with a 'Continuous' type.

Weekday	Mon	Type	Continuous
All Day	<input checked="" type="checkbox"/>	Type	Continuous
Start/End Time	00:00-00:00	Type	Continuous
Start/End Time	00:00-00:00	Type	Continuous
Start/End Time	00:00-00:00	Type	Continuous
Start/End Time	00:00-00:00	Type	Continuous
Start/End Time	00:00-00:00	Type	Continuous
Start/End Time	00:00-00:00	Type	Continuous
Start/End Time	00:00-00:00	Type	Continuous
Start/End Time	00:00-00:00	Type	Continuous

Recording Settings-Motion Detection Setting

Path

Menu –Camera Management-Motion

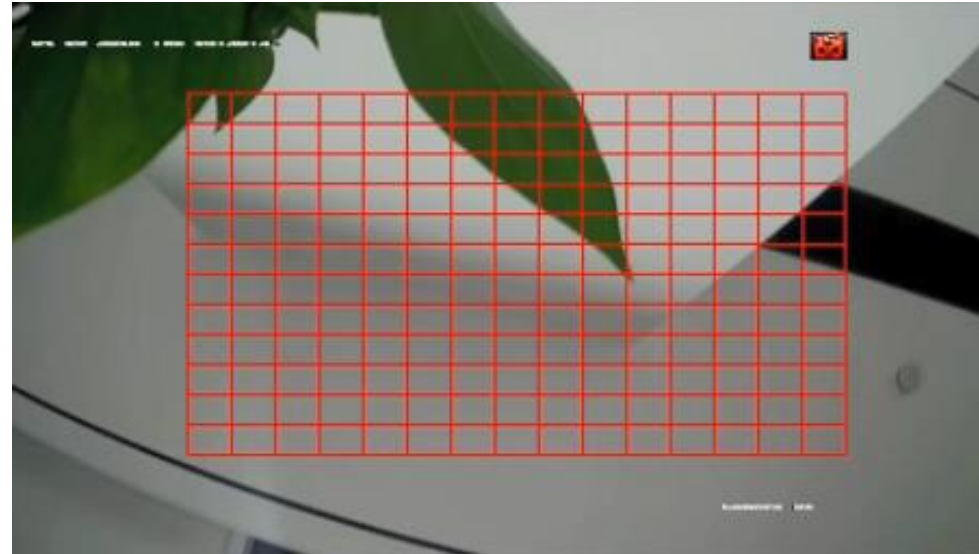
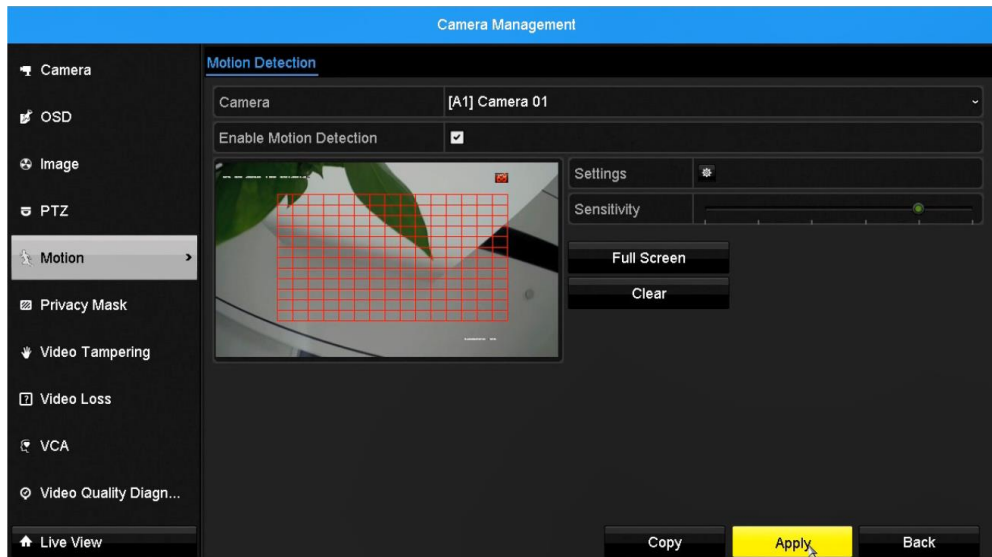
Steps for configuration:

Choose a camera and activate motion detection;

Set the detection area and sensitivity;

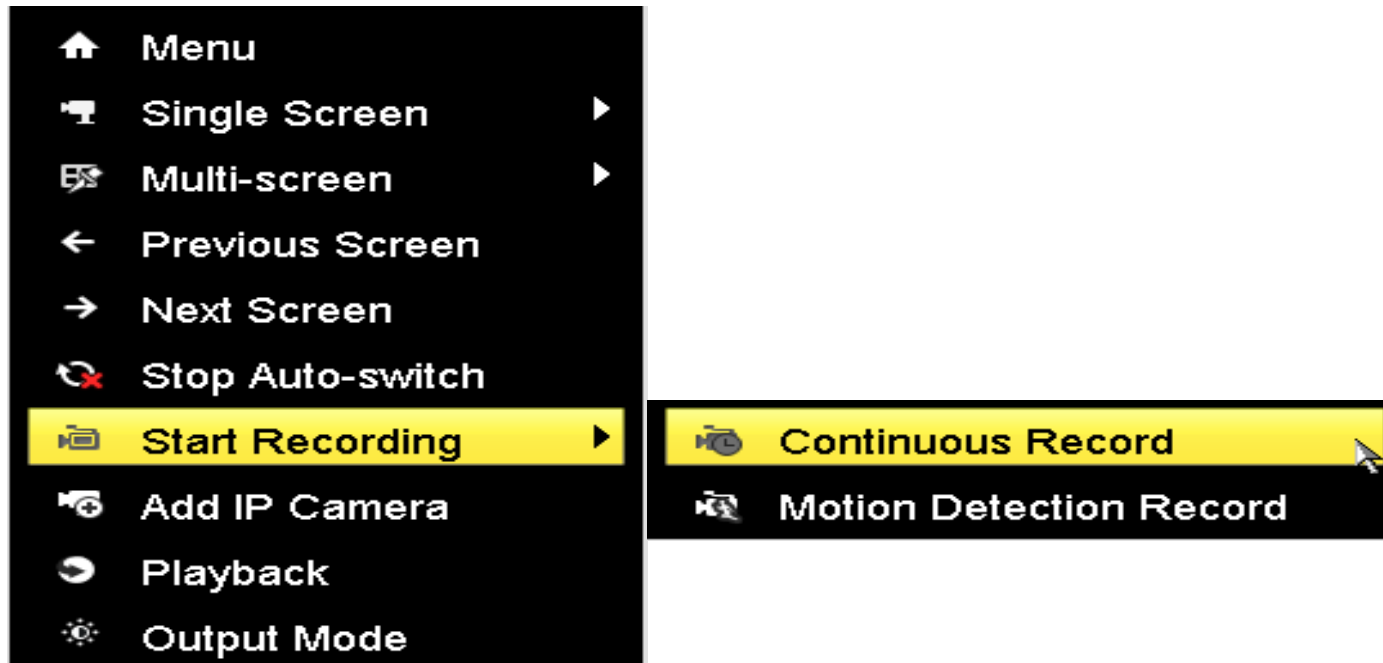
Select the channel to activate and save the settings.

Select other cameras and repeat the above steps.



Recording Settings-Start Recording

Right-click on the Live View interface and select Start recording to enable continuous recording 24/7 or motion recording for all channels.



Content

1

Install HDD & Activation & Add Camera

2

Recording setting

3

Playback and Export

4

Exceptions

Playback

Instant Playback:

Left-Click the Live Display window, and the Quick Start menu appears.

Then click on the Instant play button to access the footage of up to 5 minutes earlier.



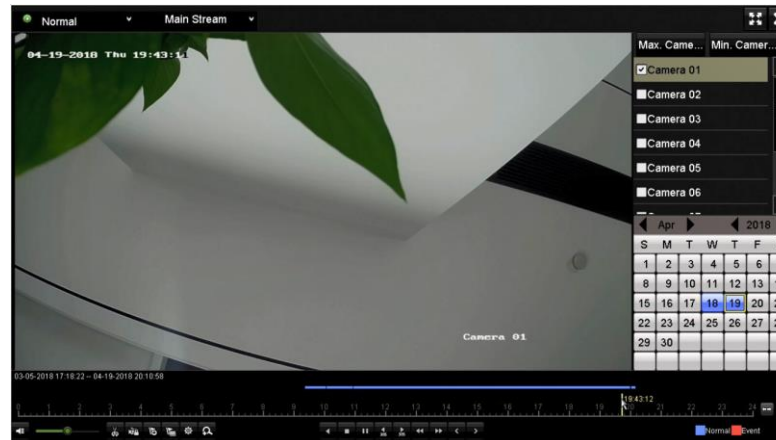
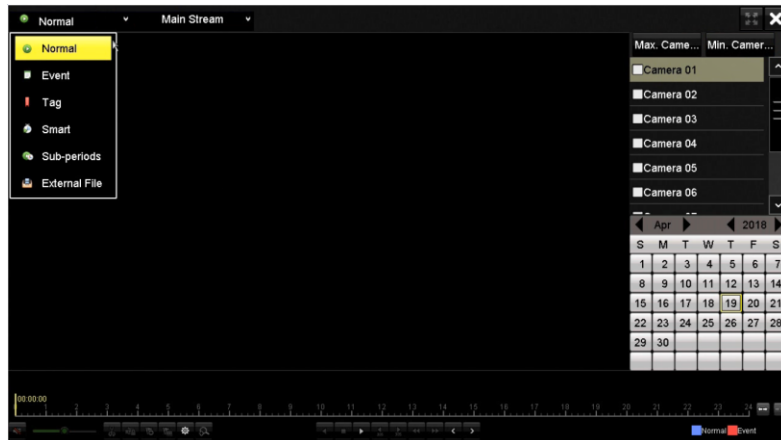
Playback

Path

Menu –Playback

Enter the Playback menu, select a channel and a date, and start the search.

You can choose different search options: Normal , Event ,Tag , Smart ,Sub-periods , External Files.



Export

Path

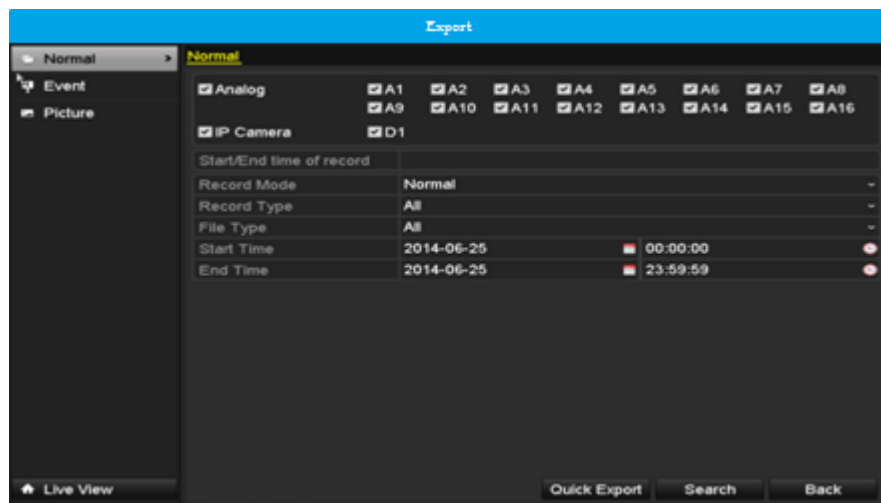
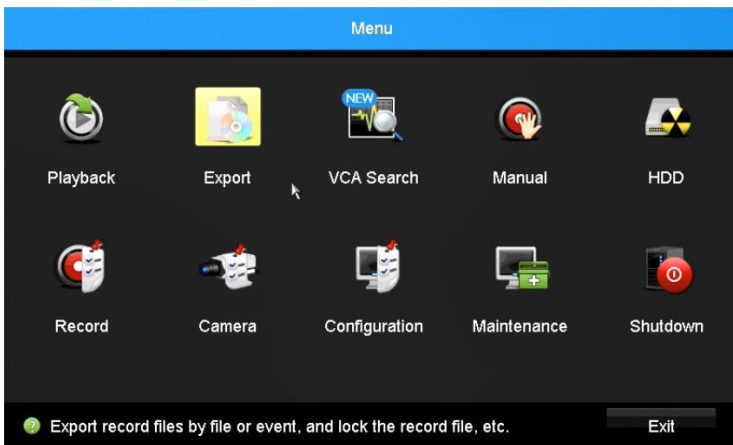
Menu-Export

Steps by Step:

Insert external HDD or USB flash drive

Set up and start the search

Select the recording file and click Export



Content

1

Install HDD & Activation & Add Camera

2

Recording setting

3

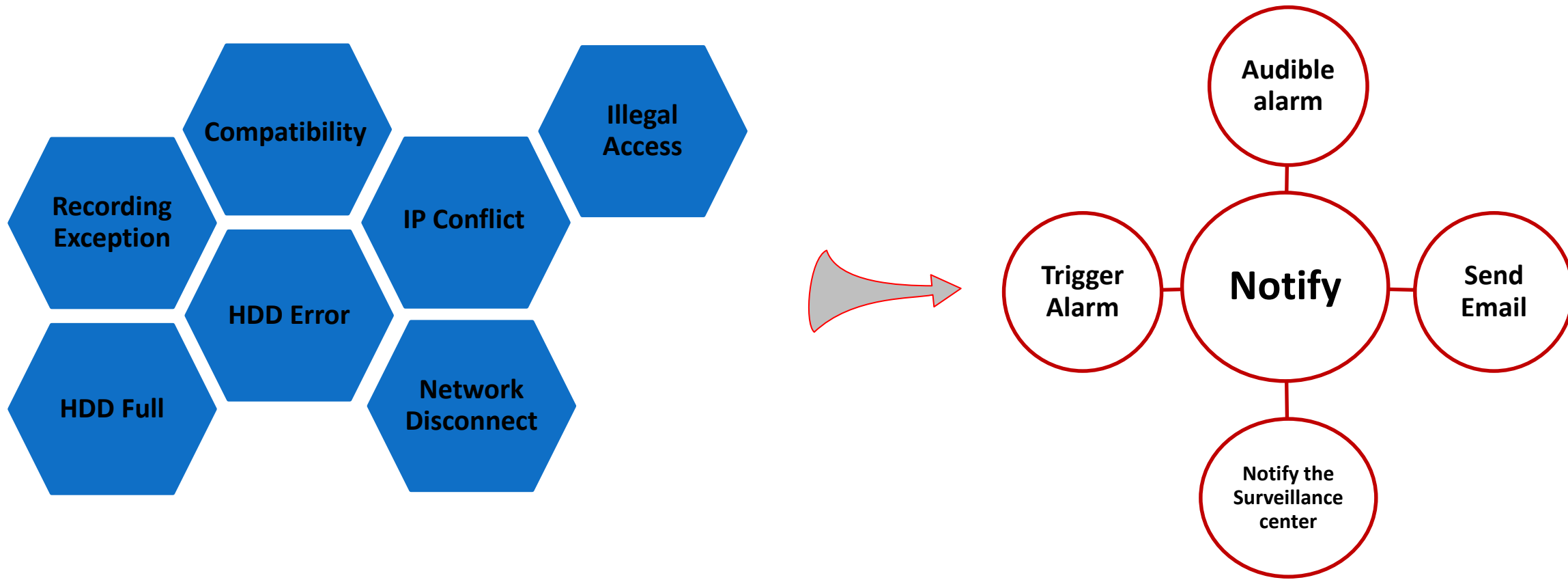
Playback and Export

4

Exceptions

Exception

Multiple system exceptions and different notification methods can be set when an exception happens.



Exception

Path

Menu-Configuration-Exceptions



A person in a dark suit and tie is shown from the chest up, pointing their right index finger towards a glowing shopping cart icon. The background features a light blue world map with several other shopping cart icons scattered across it. The overall scene is brightly lit with a warm, golden glow emanating from the icon being pointed at.

Thanks